



JB ENGINEERING AND CODE CONSULTING, P.C.

1661 Cardinal Drive • Munster, IN 46321
Phone: 219-922-6171 Fax: 219-922-6172
E-Mail: JBEngineer@aol.com

JULIUS A. BALLANCO, P.E.
President

January 22, 2009

Mr. Rick Harpenau
In-O-Vate Technologies
810 Saturn Street
Jupiter, FL 33477

Dear Mr. Harpenau:

RE: 2009 International Codes

As you are aware, the 2009 edition of the International Building Code includes a change that impacts the installation of the Dryer Box in 1 hour fire-resistance rated wall assemblies. The change requires a through penetration assembly, such as the Dryer Box, to have both a “F” and a “T” rating when tested in accordance with ASTM E814. Please note that there was not a similar change to the 2009 International Residential Code. Hence, the new requirements only apply to buildings designed and constructed in accordance with the International Building Code, not the International Residential Code.

Knowing this, it is also important to realize that the International Building Code requires all residential buildings to be protected with an automatic fire sprinkler system. When a residential building is fully sprinklered, as required by code, the dwelling unit separation wall may be reduced to a ½ hour fire resistance rating in buildings of Type 2B, 3B, and 5B construction. In other types of construction, the rating would remain 1 hour.

There are two separate results from fire testing conducted on the Dryer Box at UL. One test indicated a “F” rating, or 1 hour, and a “T” rating of 30 minutes when tested in accordance with ASTM E814. The other test result indicated a “F” rating, or 1 hour, and a “T” rating of 1 hour.

To clarify the installation of the Dryer Box in a back-to-back arrangement in 1 hour and ½ hour fire-resistance rated wall assemblies, I have prepared a series of drawings. Please be advised that the Dryer Box can be installed in both sides of either a 1 hour or ½ hour fire-resistance rated wall assembly, provided the installation follows certain requirements. The Dryer Boxes cannot back up to one another in the assembly. This means that each Dryer Box must be located in a separate wall cavity. The installation of each Dryer Box must conform to the manufacturer’s installation instructions.

The installation of the Dryer Box in a ½ hour rated assembly would apply to both wood and

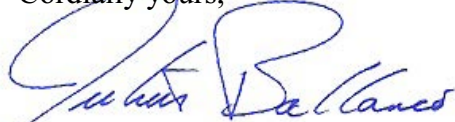
metal stud walls, provided the wall assemblies are UL listed for 1 hour or ½ hour fireresistance
January 22, 2009
Mr. Rick Harpenau
In-O-Vate Technologies

rating. The wall cavity housing each Dryer Box must be filled with fiberglass batt insulation. For penetrations by the Dryer Box of a 1 hour fireresistance rated assembly, the penetrations are only permitted for UL listed wood stud wall assemblies.

I have prepared twelve separate drawings that identify the details of the Dryer Box installation. The details drawings are identified as Drawing Number M10 through M21. These drawings provide a depiction of the acceptable installation of Dryer Box in a back-to-back installation.

If you have any questions regarding these designs, please don't hesitate to call.

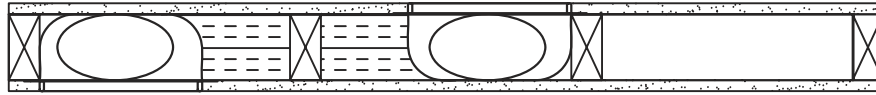
Cordially yours,



Julius Ballanco, P.E.
President

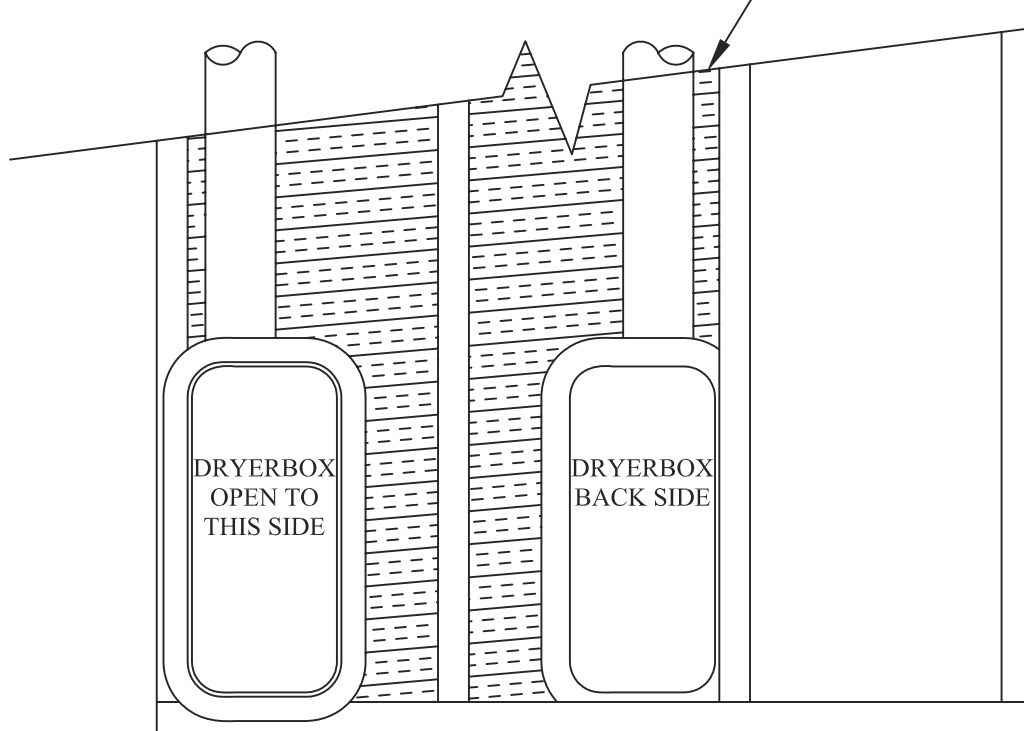
1 HR F RATING, 1 HR T RATING, ASTM E814
 FIRERESISTANCE RATED WALL ASSEMBLY:
 2"x4" WOOD STUD
 5/8" TYPE X GYPSUM WALLBOARD

DRYERBOX OPEN TO
THIS SIDE



DRYERBOX OPEN TO
THIS SIDE

FIBERGLASS BATT INSULATION



NOTES:

1. DRYERBOX TO BE INSTALLED IN ACCORDANCE WITH THE MANUFACTURER'S INSTALLATION INSTRUCTIONS AND UL LISTING.
2. ONLY ONE DRYERBOX SHALL BE INSTALLED IN A CAVITY SPACE OF A 1 HR FIRERESISTANCE RATED WALL ASSEMBLY.
3. WHEN INSTALLED IN BACK-TO-BACK ARRANGEMENTS, EACH DRYERBOX SHALL BE INSTALLED IN A SEPARATE WALL CAVITY. THE DRYERBOXES SHALL BE SEPARATED BY A WOOD OR METAL STUD BETWEEN THE WALL CAVITIES.
4. BACK-TO-BACK INSTALLATIONS ARE PERMITTED FOR EITHER A 2"X4" STUD WALL ASSEMBLY OR A 2"X6" STUD WALL ASSEMBLY.
5. THE STUD CAVITY WITH THE DRYERBOX MUST BE FILLED WITH FIBERGLASS BATT INSULATION.
6. THE DRYERBOX MAY BE INSTALLED AT ANY ELEVATION ABOVE THE FINISHED FLOOR.



350 DRYERBOX
 BACK-TO-BACK
 INSTALLATION

JB ENGINEERING AND CODE CONSULTING, P.C.

1661 CARDINAL DRIVE, MUNSTER, IN 46321 TEL:219-922-6171; FAX: 219-922-6172
 JULIUS BALLANCO, P.E. IN REG# PE60900631 - IN ENG PROF CORP # PC50910000

DWG. NO.

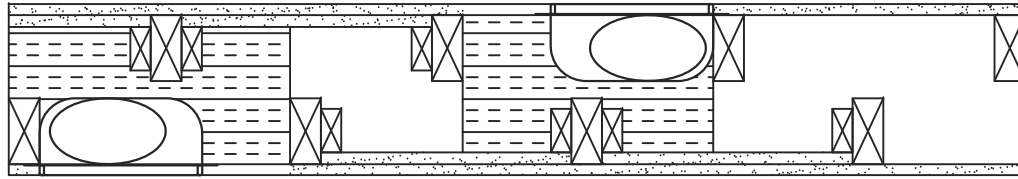
DRAWN BY: JB

SCALE: NTS

DATE: 9/19/07

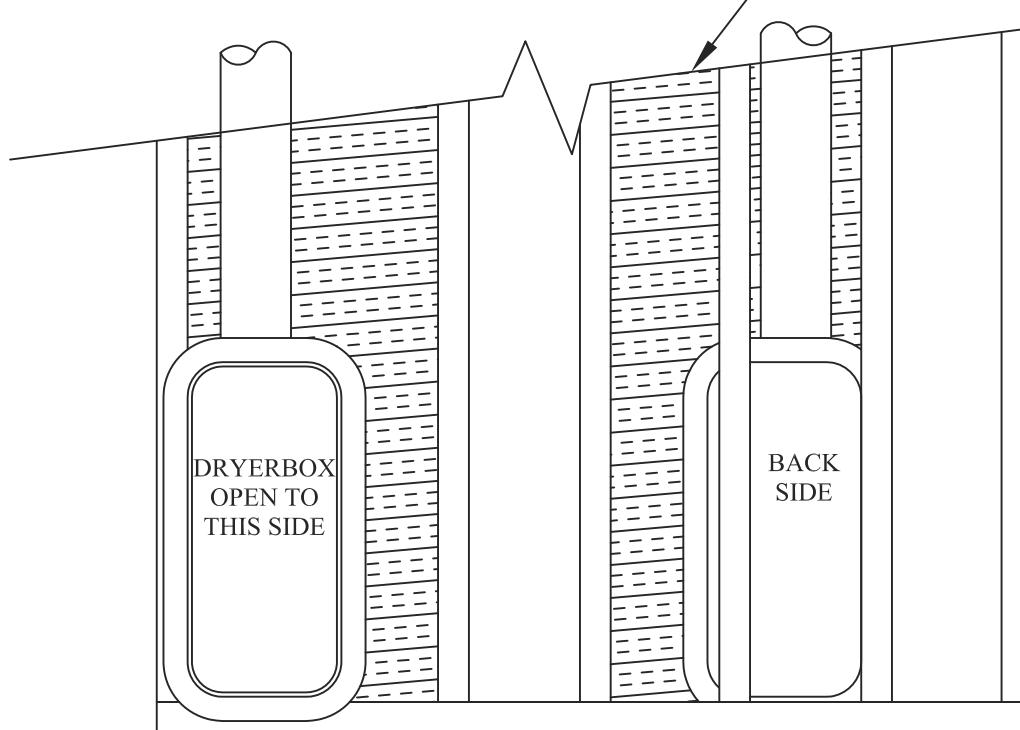
M-1

DRYERBOX OPEN TO THIS SIDE



DRYERBOX OPEN TO THIS SIDE

FIBERGLASS BATT INSULATION



NOTES:

1. DRYERBOX TO BE INSTALLED IN ACCORDANCE WITH THE MANUFACTURER'S INSTALLATION INSTRUCTIONS AND UL LISTING.
2. ONLY ONE DRYERBOX SHALL BE INSTALLED IN A CAVITY SPACE OF A 1 HR FIRERESISTANCE RATED WALL ASSEMBLY.
3. WHEN INSTALLED IN BACK-TO-BACK ARRANGEMENTS, EACH DRYERBOX SHALL BE INSTALLED IN A SEPARATE WALL CAVITY. THE DRYERBOXES SHALL BE SEPARATED BY A WOOD STUD BETWEEN THE WALL CAVITIES.
4. BACK-TO-BACK INSTALLATIONS ARE PERMITTED FOR EITHER A 2"X4" STUD WALL ASSEMBLY OR A 2"X6" STUD WALL ASSEMBLY.
5. THE STUD CAVITY WITH THE DRYERBOX MUST BE FILLED WITH FIBERGLASS BATT INSULATION.
6. THE DRYERBOX MAY BE INSTALLED AT ANY ELEVATION ABOVE THE FINISHED FLOOR.



**350 DRYERBOX
OFFSET
DOUBLE WALL**

JB ENGINEERING AND CODE CONSULTING, P.C.

1661 CARDINAL DRIVE, MUNSTER, IN 46321 TEL:219-922-6171; FAX: 219-922-6172
JULIUS BALLANCO, P.E. IN REG# PE60900631 - IN ENG PROF CORP # PC50910000

DWG. NO.

M-11

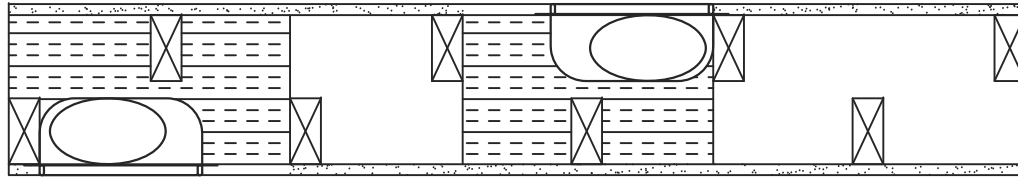
DRAWN BY: JB

SCALE: NTS

DATE: 1/13/09

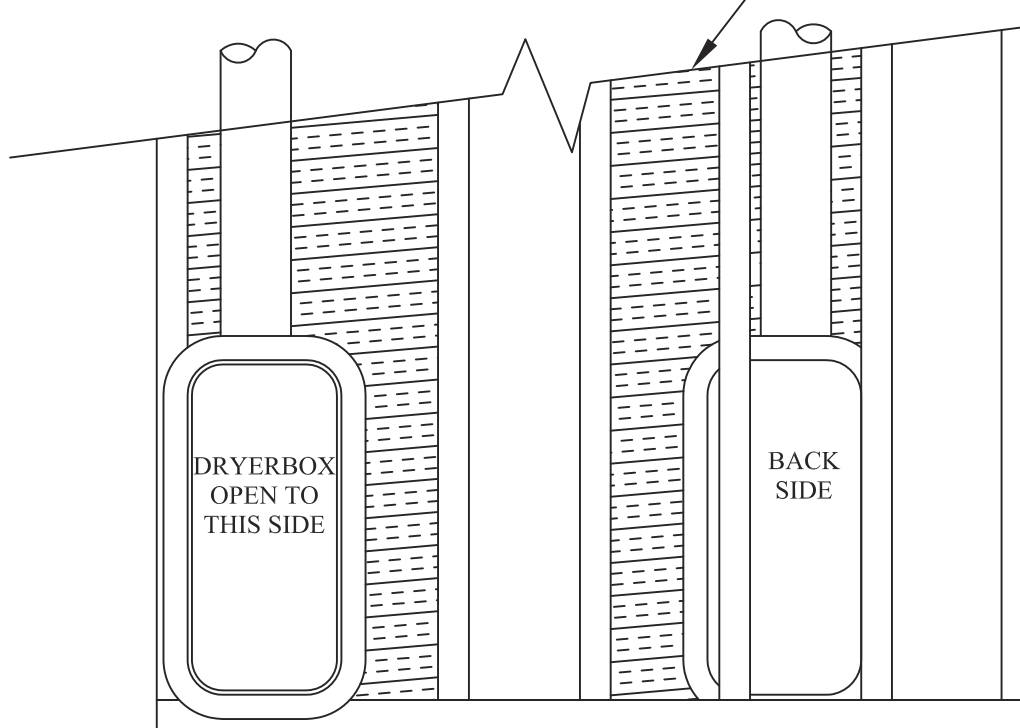
1 HR F RATING, 1/2 HR T RATING, ASTM E814
 FIRERESISTANCE RATED ASSEMBLY:
 2"x4" WOOD STUD
 5/8" TYPE X GYPSUM WALLBOARD

DRYERBOX OPEN TO
 THIS SIDE



DRYERBOX OPEN TO
 THIS SIDE

FIBERGLASS BATT INSULATION



DRYERBOX
 OPEN TO
 THIS SIDE

BACK
 SIDE

NOTES:

1. DRYERBOX TO BE INSTALLED IN ACCORDANCE WITH THE MANUFACTURER'S INSTALLATION INSTRUCTIONS AND UL TEST REPORT AND LISTING.
2. ONLY ONE DRYERBOX SHALL BE INSTALLED IN A CAVITY SPACE OF A 1/2 HR FIRERESISTANCE RATED WALL ASSEMBLY.
3. WHEN INSTALLED IN BACK-TO-BACK ARRANGEMENTS, EACH DRYERBOX SHALL BE INSTALLED IN A SEPARATE WALL CAVITY. THE DRYERBOXES SHALL BE SEPARATED BY A WOOD OR METAL STUD BETWEEN THE WALL CAVITIES.
4. BACK-TO-BACK INSTALLATIONS ARE PERMITTED FOR EITHER A 2"X4" STUD WALL ASSEMBLY OR A 2"X6" STUD WALL ASSEMBLY.
5. THE STUD CAVITY WITH THE DRYERBOX MUST BE FILLED WITH FIBERGLASS BATT INSULATION.
6. THE DRYERBOX MAY BE INSTALLED AT ANY ELEVATION ABOVE THE FINISHED FLOOR.



350 DRYERBOX
 OFFSET
 DOUBLE WALL

JB ENGINEERING AND CODE CONSULTING, P.C.

1661 CARDINAL DRIVE, MUNSTER, IN 46321 TEL:219-922-6171; FAX: 219-922-6172
 JULIUS BALLANCO, P.E. IN REG# PE60900631 - IN ENG PROF CORP # PC50910000

DWG. NO.

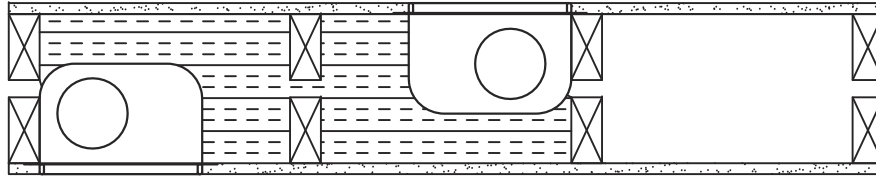
M-12

DRAWN BY: JB

SCALE: NTS

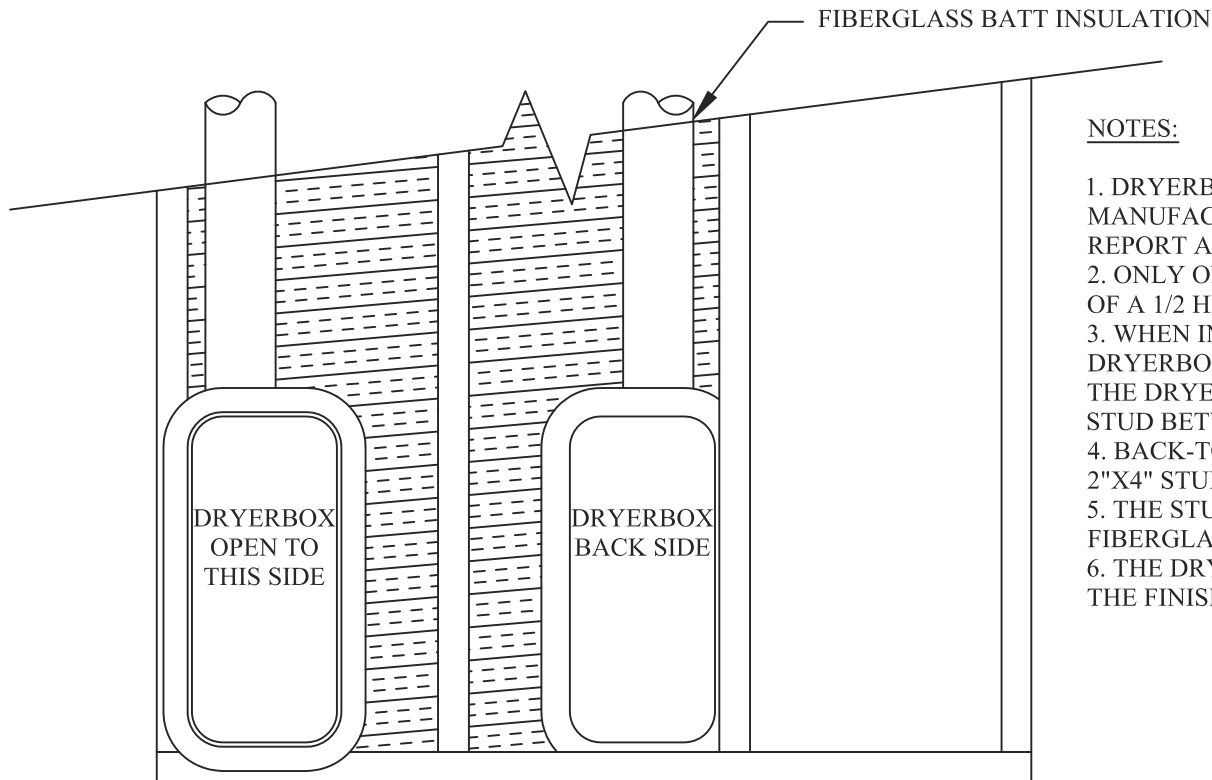
DATE: 1/13/09

DRYERBOX OPEN TO THIS SIDE



1 HR F RATING, 1/2 HR T RATING, ASTM E814
FIRERESISTANCE RATED WALL ASSEMBLY:
 2"x4" WOOD STUD
 5/8" TYPE X GYPSUM WALLBOARD

DRYERBOX OPEN TO THIS SIDE



NOTES:

1. DRYERBOX TO BE INSTALLED IN ACCORDANCE WITH THE MANUFACTURER'S INSTALLATION INSTRUCTIONS AND UL TEST REPORT AND LISTING.
2. ONLY ONE DRYERBOX SHALL BE INSTALLED IN A CAVITY SPACE OF A 1/2 HR FIRERESISTANCE RATED WALL ASSEMBLY.
3. WHEN INSTALLED IN BACK-TO-BACK ARRANGEMENTS, EACH DRYERBOX SHALL BE INSTALLED IN A SEPARATE WALL CAVITY. THE DRYERBOXES SHALL BE SEPARATED BY A WOOD OR METAL STUD BETWEEN THE WALL CAVITIES.
4. BACK-TO-BACK INSTALLATIONS ARE PERMITTED FOR EITHER A 2"X4" STUD WALL ASSEMBLY OR A 2"X6" STUD WALL ASSEMBLY.
5. THE STUD CAVITY WITH THE DRYERBOX MUST BE FILLED WITH FIBERGLASS BATT INSULATION.
6. THE DRYERBOX MAY BE INSTALLED AT ANY ELEVATION ABOVE THE FINISHED FLOOR.



425 DRYERBOX
 BACK-TO-BACK
 DOUBLE WALL

JB ENGINEERING AND CODE CONSULTING, P.C.

1661 CARDINAL DRIVE, MUNSTER, IN 46321 TEL:219-922-6171; FAX: 219-922-6172
 JULIUS BALLANCO, P.E. IN REG# PE60900631 - IN ENG PROF CORP # PC50910000

DWG. NO.

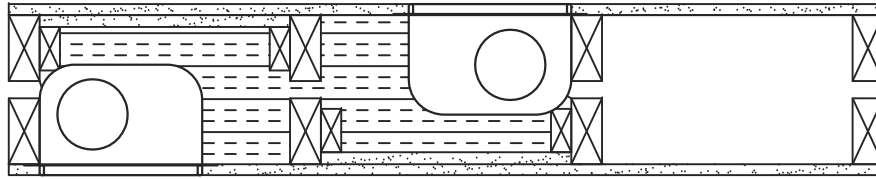
M-13

DRAWN BY: JB

SCALE: NTS

DATE: 1/13/09

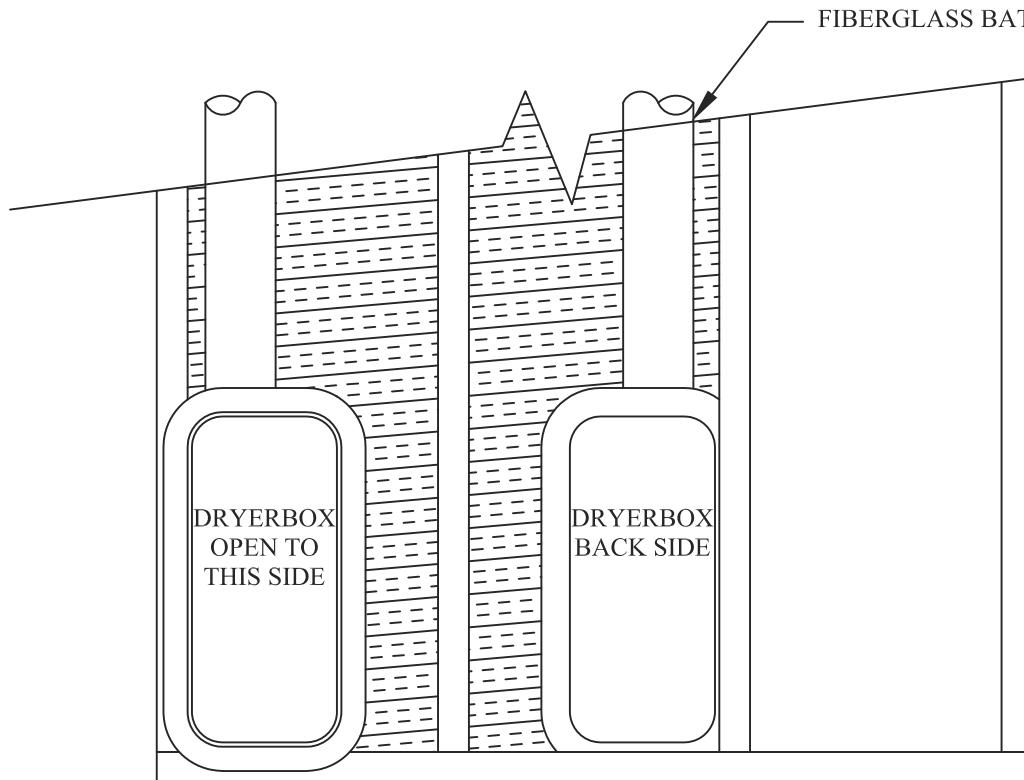
DRYERBOX OPEN TO THIS SIDE



DRYERBOX OPEN TO THIS SIDE

1 HR F RATING, 1 HR T RATING, ASTM E814
FIRERESISTANCE RATED WALL ASSEMBLY:
2"x4" WOOD STUD
5/8" TYPE X GYPSUM WALLBOARD
ONE LAYER ON FRONT SIDE, TWO LAYERS ON
BACK SIDE

FIBERGLASS BATT INSULATION



NOTES:

1. DRYERBOX TO BE INSTALLED IN ACCORDANCE WITH THE MANUFACTURER'S INSTALLATION INSTRUCTIONS AND UL LISTING.
2. ONLY ONE DRYERBOX SHALL BE INSTALLED IN A CAVITY SPACE OF A 1 HR FIRERESISTANCE RATED WALL ASSEMBLY.
3. WHEN INSTALLED IN BACK-TO-BACK ARRANGEMENTS, EACH DRYERBOX SHALL BE INSTALLED IN A SEPARATE WALL CAVITY. THE DRYERBOXES SHALL BE SEPARATED BY A WOOD STUD BETWEEN THE WALL CAVITIES.
4. BACK-TO-BACK INSTALLATIONS ARE PERMITTED FOR EITHER A 2"X4" STUD WALL ASSEMBLY OR A 2"X6" STUD WALL ASSEMBLY.
5. THE STUD CAVITY WITH THE DRYERBOX MUST BE FILLED WITH FIBERGLASS BATT INSULATION.
6. THE DRYERBOX MAY BE INSTALLED AT ANY ELEVATION ABOVE THE FINISHED FLOOR.



425 DRYERBOX
BACK-TO-BACK
DOUBLE WALL

JB ENGINEERING AND CODE CONSULTING, P.C.

1661 CARDINAL DRIVE, MUNSTER, IN 46321 TEL:219-922-6171; FAX: 219-922-6172
JULIUS BALLANCO, P.E. IN REG# PE60900631 - IN ENG PROF CORP # PC50910000

DWG. NO.

DRAWN BY: JB

SCALE: NTS

DATE: 1/13/09

M-14

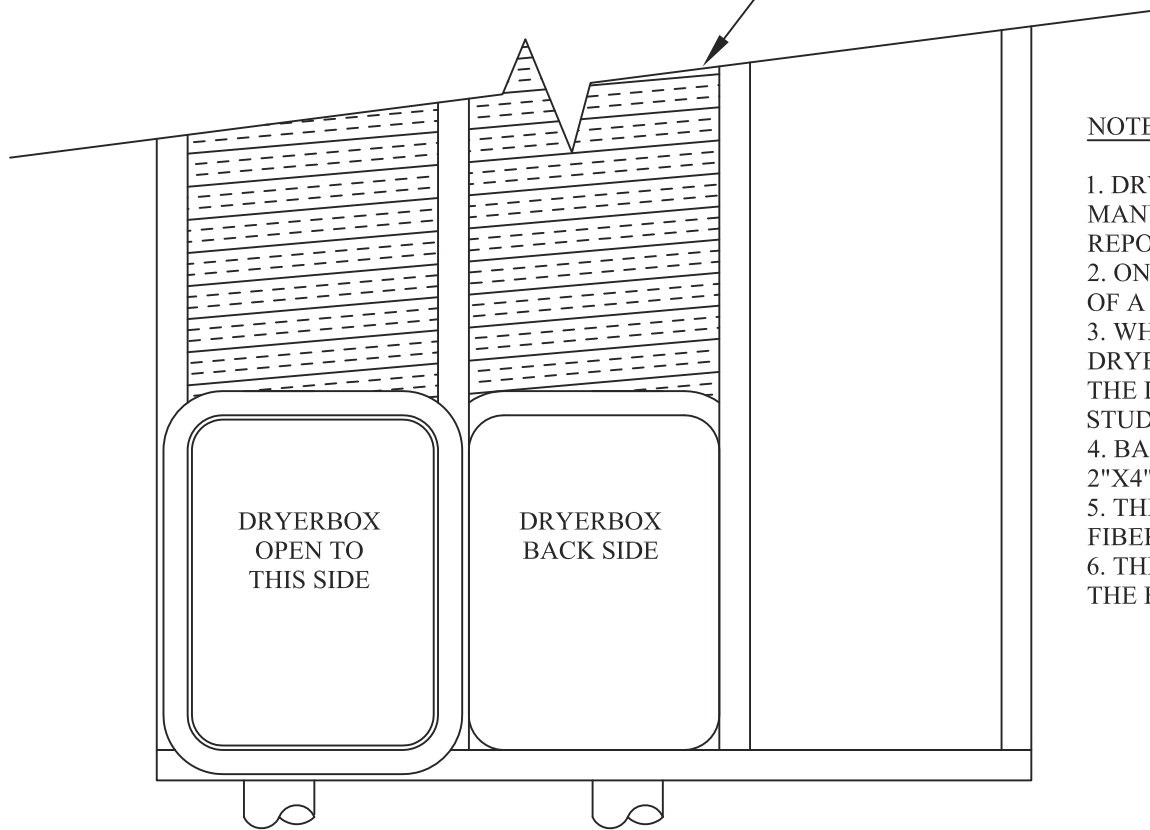
1 HR F RATING, 1/2 HR T RATING, ASTM E814
 FIRERESISTANCE RATED WALL ASSEMBLY:
 2"x4" WOOD STUD
 5/8" TYPE X GYPSUM WALLBOARD

DRYERBOX OPEN TO
THIS SIDE



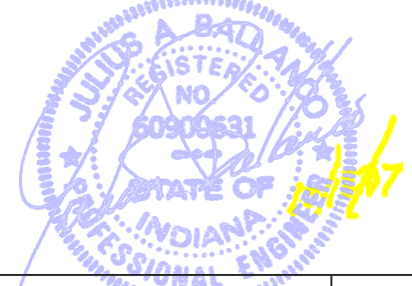
DRYERBOX OPEN TO
THIS SIDE

FIBERGLASS BATT INSULATION



NOTES:

1. DRYERBOX TO BE INSTALLED IN ACCORDANCE WITH THE MANUFACTURER'S INSTALLATION INSTRUCTIONS AND UL TEST REPORT AND LISTING.
2. ONLY ONE DRYERBOX SHALL BE INSTALLED IN A CAVITY SPACE OF A 1/2 HR FIRERESISTANCE RATED WALL ASSEMBLY.
3. WHEN INSTALLED IN BACK-TO-BACK ARRANGEMENTS, EACH DRYERBOX SHALL BE INSTALLED IN A SEPARATE WALL CAVITY. THE DRYERBOXES SHALL BE SEPARATED BY A WOOD OR METAL STUD BETWEEN THE WALL CAVITIES.
4. BACK-TO-BACK INSTALLATIONS ARE PERMITTED FOR EITHER A 2"X4" STUD WALL ASSEMBLY OR A 2"X6" STUD WALL ASSEMBLY.
5. THE STUD CAVITY WITH THE DRYERBOX MUST BE FILLED WITH FIBERGLASS BATT INSULATION.
6. THE DRYERBOX MAY BE INSTALLED AT ANY ELEVATION ABOVE THE FINISHED FLOOR.



3D DRYERBOX
BACK-TO-BACK
INSTALLATION

JB ENGINEERING AND CODE CONSULTING, P.C.

1661 CARDINAL DRIVE, MUNSTER, IN 46321 TEL:219-922-6171; FAX: 219-922-6172
 JULIUS BALLANCO, P.E. IN REG# PE60900631 - IN ENG PROF CORP # PC50910000

DWG. NO.

M-15

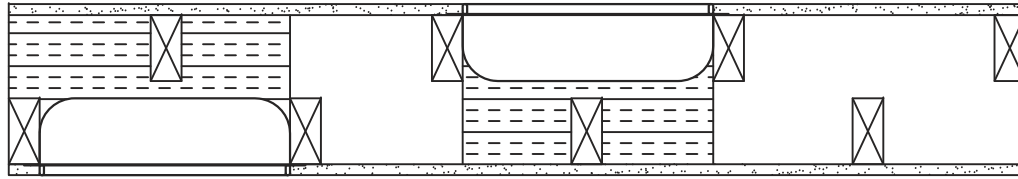
DRAWN BY: JB

SCALE: NTS

DATE: 1/13/09

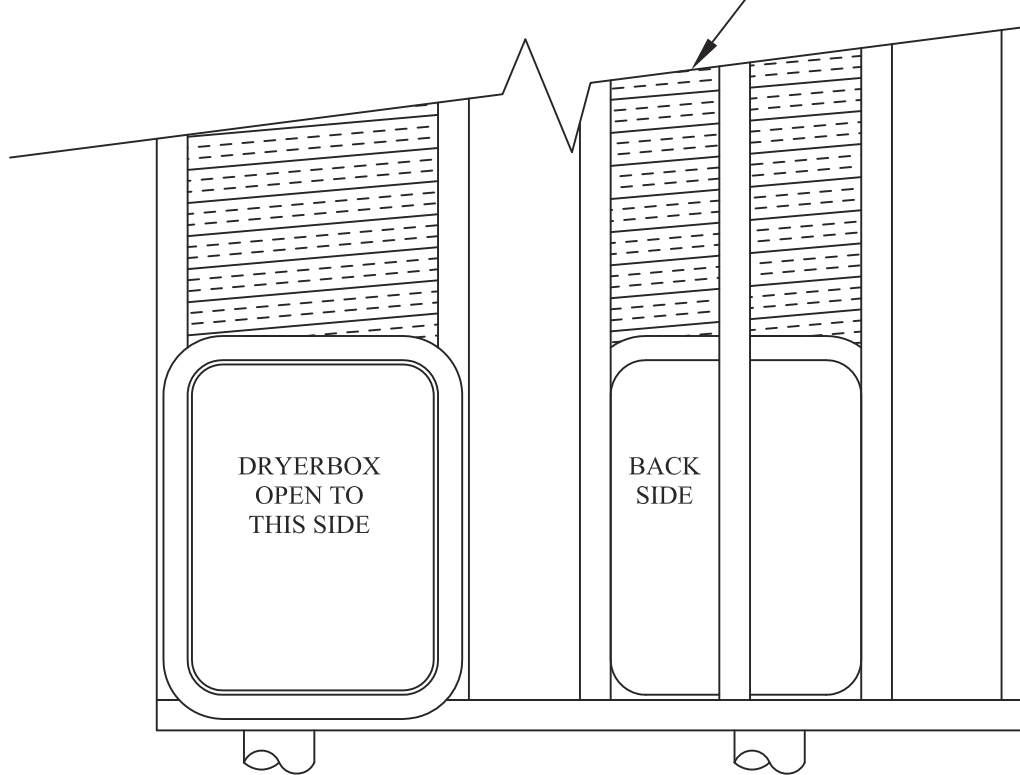
1 HR F RATING, 1/2 HR T RATING, ASTM E814
 FIRERESISTANCE RATED WALL ASSEMBLY:
 2"x4" WOOD STUD
 5/8" TYPE X GYPSUM WALLBOARD

DRYERBOX OPEN TO
 THIS SIDE



DRYERBOX OPEN TO
 THIS SIDE

FIBERGLASS BATT INSULATION



NOTES:

1. DRYERBOX TO BE INSTALLED IN ACCORDANCE WITH THE MANUFACTURER'S INSTALLATION INSTRUCTIONS AND ULTEST REPORT AND LISTING.
2. ONLY ONE DRYERBOX SHALL BE INSTALLED IN A CAVITY SPACE OF A 1/2 HR FIRERESISTANCE RATED WALL ASSEMBLY.
3. WHEN INSTALLED IN BACK-TO-BACK ARRANGEMENTS, EACH DRYERBOX SHALL BE INSTALLED IN A SEPARATE WALL CAVITY. THE DRYERBOXES SHALL BE SEPARATED BY A WOOD OR METAL STUD BETWEEN THE WALL CAVITIES.
4. BACK-TO-BACK INSTALLATIONS ARE PERMITTED FOR EITHER A 2"x4" STUD WALL ASSEMBLY OR A 2"x6" STUD WALL ASSEMBLY.
5. THE STUD CAVITY WITH THE DRYERBOX MUST BE FILLED WITH FIBERGLASS BATT INSULATION.
6. THE DRYERBOX MAY BE INSTALLED AT ANY ELEVATION ABOVE THE FINISHED FLOOR.



3D DRYERBOX
 OFFSET
 DOUBLE WALL

JB ENGINEERING AND CODE CONSULTING, P.C.

1661 CARDINAL DRIVE, MUNSTER, IN 46321 TEL:219-922-6171; FAX: 219-922-6172
 JULIUS BALLANCO, P.E. IN REG# PE60900631 - IN ENG PROF CORP # PC50910000

DWG. NO.

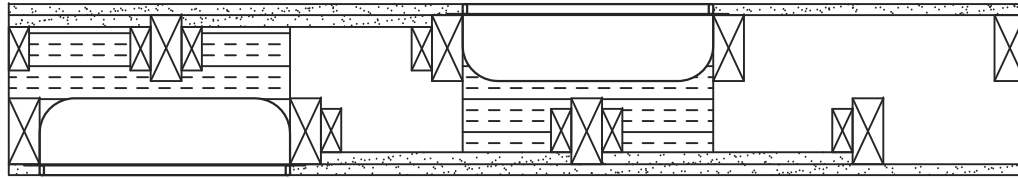
M-16

DRAWN BY: JB

SCALE: NTS

DATE: 1/13/09

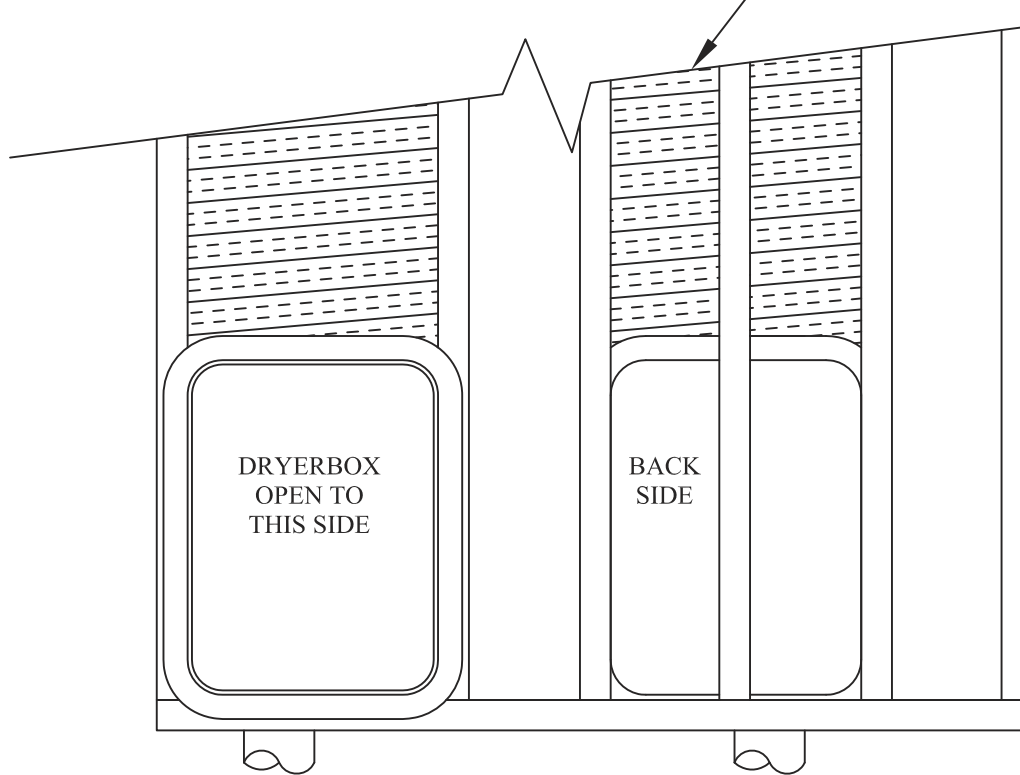
DRYERBOX OPEN TO THIS SIDE



DRYERBOX OPEN TO THIS SIDE

1 HR F RATING, 1 HR T RATING, ASTM E814
FIRERESISTANCE RATED WALL ASSEMBLY:
 2"x4" WOOD STUD
 5/8" TYPE X GYPSUM WALLBOARD
 ONE LAYER ON FRONT SIDE, TWO LAYERS ON BACK SIDE

FIBERGLASS BATT INSULATION



NOTES:

1. DRYERBOX TO BE INSTALLED IN ACCORDANCE WITH THE MANUFACTURER'S INSTALLATION INSTRUCTIONS AND UL LISTING.
2. ONLY ONE DRYERBOX SHALL BE INSTALLED IN A CAVITY SPACE OF A 1 HR FIRERESISTANCE RATED WALL ASSEMBLY.
3. WHEN INSTALLED IN BACK-TO-BACK ARRANGEMENTS, EACH DRYERBOX SHALL BE INSTALLED IN A SEPARATE WALL CAVITY. THE DRYERBOXES SHALL BE SEPARATED BY A WOOD STUD BETWEEN THE WALL CAVITIES.
4. BACK-TO-BACK INSTALLATIONS ARE PERMITTED FOR EITHER A 2"X4" STUD WALL ASSEMBLY OR A 2"X6" STUD WALL ASSEMBLY.
5. THE STUD CAVITY WITH THE DRYERBOX MUST BE FILLED WITH FIBERGLASS BATT INSULATION.
6. THE DRYERBOX MAY BE INSTALLED AT ANY ELEVATION ABOVE THE FINISHED FLOOR.



**3D DRYERBOX
 OFFSET
 DOUBLE WALL**

JB ENGINEERING AND CODE CONSULTING, P.C.

1661 CARDINAL DRIVE, MUNSTER, IN 46321 TEL:219-922-6171; FAX: 219-922-6172
 JULIUS BALLANCO, P.E. IN REG# PE60900631 - IN ENG PROF CORP # PC50910000

DWG. NO.

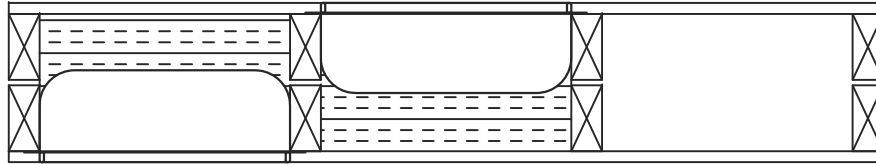
M-17

DRAWN BY: JB

SCALE: NTS

DATE: 1/13/09

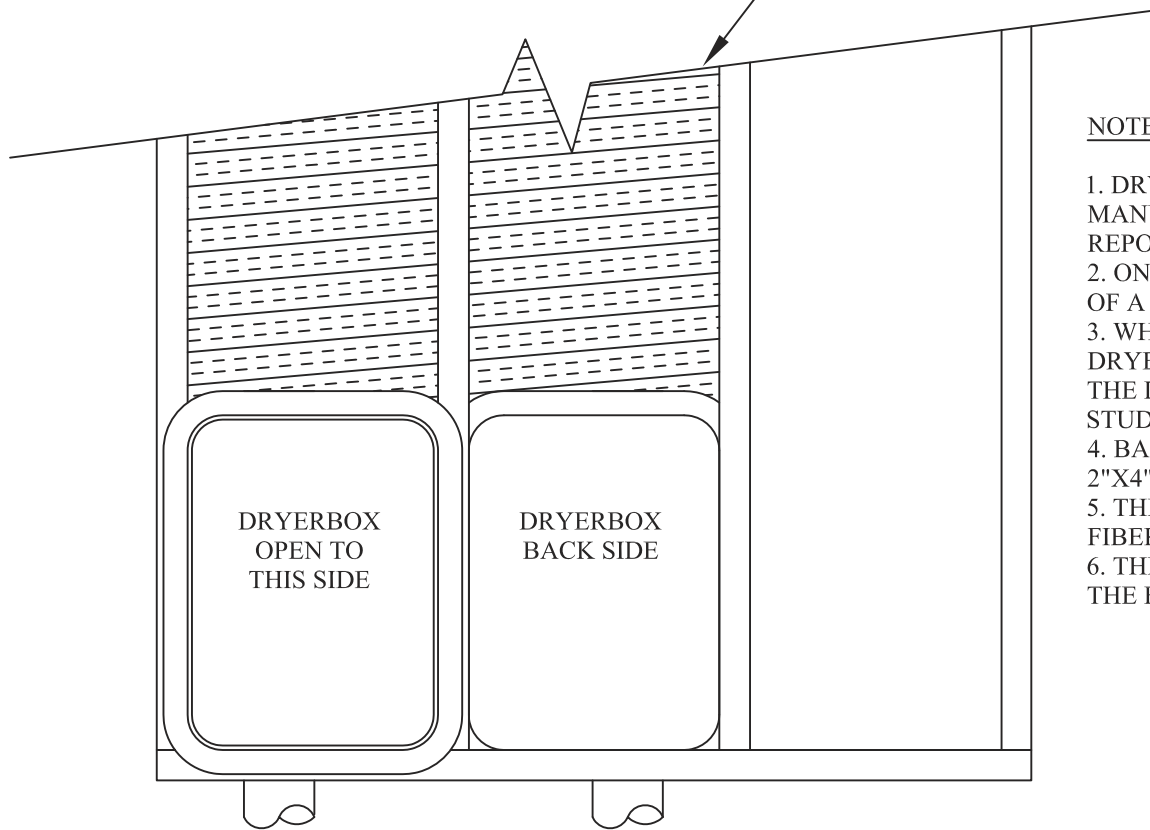
DRYERBOX OPEN TO THIS SIDE



1 HR F RATING, 1/2 HR T RATING, ASTM E814
FIRERESISTANCE RATED WALL ASSEMBLY:
2"x4" WOOD STUD
5/8" TYPE X GYPSUM WALLBOARD

DRYERBOX OPEN TO THIS SIDE

FIBERGLASS BATT INSULATION

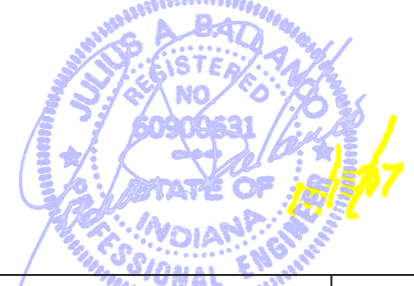


DRYERBOX
OPEN TO
THIS SIDE

DRYERBOX
BACK SIDE

NOTES:

1. DRYERBOX TO BE INSTALLED IN ACCORDANCE WITH THE MANUFACTURER'S INSTALLATION INSTRUCTIONS AND UL TEST REPORT AND LISTING.
2. ONLY ONE DRYERBOX SHALL BE INSTALLED IN A CAVITY SPACE OF A 1/2 HR FIRERESISTANCE RATED WALL ASSEMBLY.
3. WHEN INSTALLED IN BACK-TO-BACK ARRANGEMENTS, EACH DRYERBOX SHALL BE INSTALLED IN A SEPARATE WALL CAVITY. THE DRYERBOXES SHALL BE SEPARATED BY A WOOD OR METAL STUD BETWEEN THE WALL CAVITIES.
4. BACK-TO-BACK INSTALLATIONS ARE PERMITTED FOR EITHER A 2"x4" STUD WALL ASSEMBLY OR A 2"x6" STUD WALL ASSEMBLY.
5. THE STUD CAVITY WITH THE DRYERBOX MUST BE FILLED WITH FIBERGLASS BATT INSULATION.
6. THE DRYERBOX MAY BE INSTALLED AT ANY ELEVATION ABOVE THE FINISHED FLOOR.



**4D DRYERBOX
BACK-TO-BACK
DOUBLE WALL**

JB ENGINEERING AND CODE CONSULTING, P.C.

1661 CARDINAL DRIVE, MUNSTER, IN 46321 TEL:219-922-6171; FAX: 219-922-6172
JULIUS BALLANCO, P.E. IN REG# PE60900631 - IN ENG PROF CORP # PC50910000

DWG. NO.

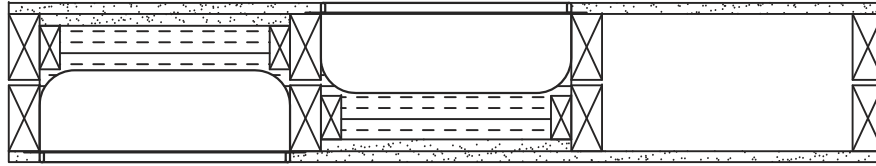
M-18

DRAWN BY: JB

SCALE: NTS

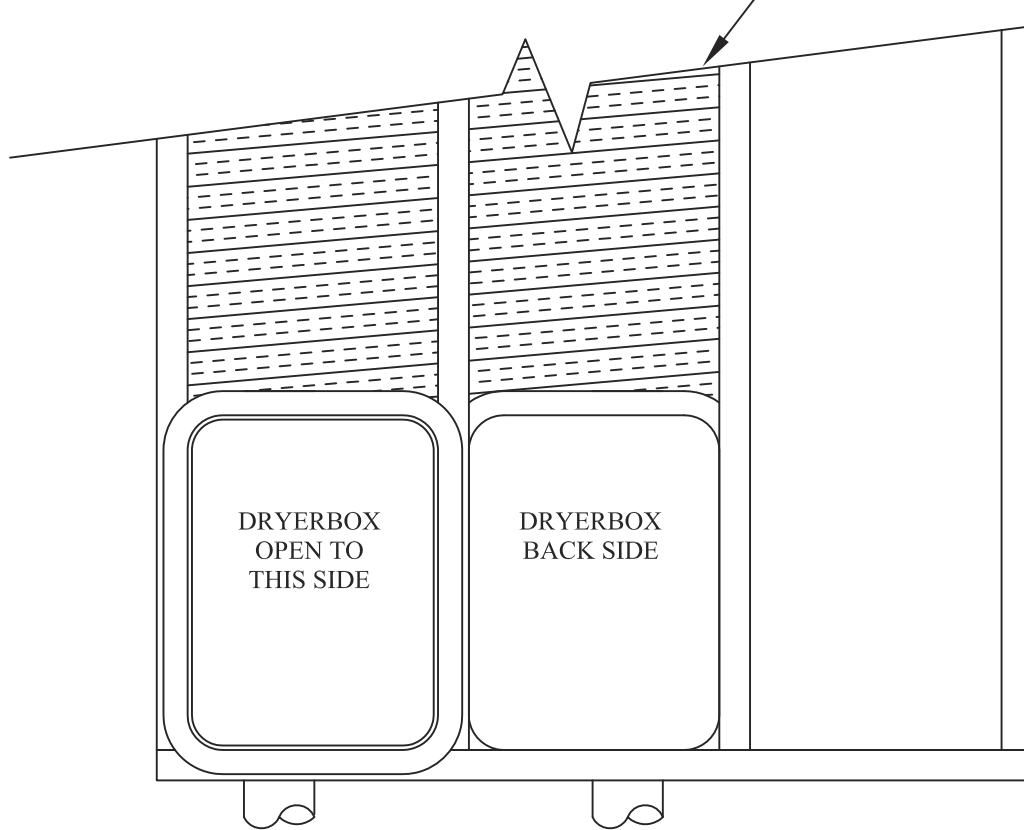
DATE: 1/13/09

DRYERBOX OPEN TO THIS SIDE



DRYERBOX OPEN TO THIS SIDE

FIBERGLASS BATT INSULATION



1 HR F RATING, 1 HR T RATING, ASTM E814
FIRERESISTANCE RATED WALL ASSEMBLY:
2"x4" WOOD STUD
5/8" TYPE X GYPSUM WALLBOARD
ONE LAYER ON FRONT SIDE, TWO LAYERS ON
BACK SIDE

NOTES:

1. DRYERBOX TO BE INSTALLED IN ACCORDANCE WITH THE MANUFACTURER'S INSTALLATION INSTRUCTIONS AND UL LISTING.
2. ONLY ONE DRYERBOX SHALL BE INSTALLED IN A CAVITY SPACE OF A 1 HR FIRERESISTANCE RATED WALL ASSEMBLY.
3. WHEN INSTALLED IN BACK-TO-BACK ARRANGEMENTS, EACH DRYERBOX SHALL BE INSTALLED IN A SEPARATE WALL CAVITY. THE DRYERBOXES SHALL BE SEPARATED BY A WOOD STUD BETWEEN THE WALL CAVITIES.
4. BACK-TO-BACK INSTALLATIONS ARE PERMITTED FOR EITHER A 2"x4" STUD WALL ASSEMBLY OR A 2"x6" STUD WALL ASSEMBLY.
5. THE STUD CAVITY WITH THE DRYERBOX MUST BE FILLED WITH FIBERGLASS BATT INSULATION.
6. THE DRYERBOX MAY BE INSTALLED AT ANY ELEVATION ABOVE THE FINISHED FLOOR.



**4D DRYERBOX
BACK-TO-BACK
DOUBLE WALL**

JB ENGINEERING AND CODE CONSULTING, P.C.

1661 CARDINAL DRIVE, MUNSTER, IN 46321 TEL:219-922-6171; FAX: 219-922-6172
JULIUS BALLANCO, P.E. IN REG# PE60900631 - IN ENG PROF CORP # PC50910000

DWG. NO.

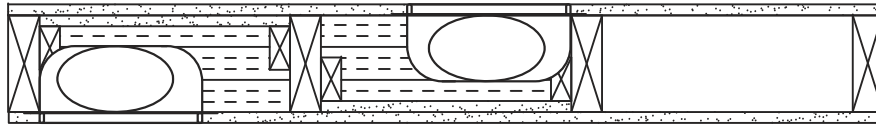
DRAWN BY: JB

SCALE: NTS

DATE: 1/13/09

M-19

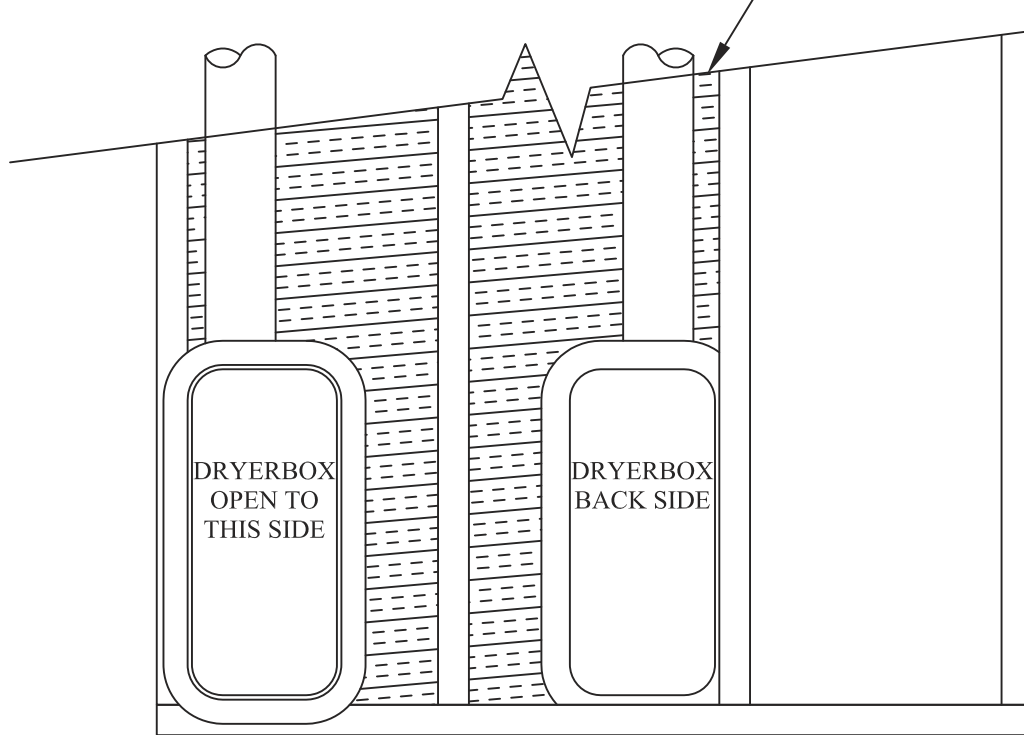
DRYERBOX OPEN TO THIS SIDE



DRYERBOX OPEN TO THIS SIDE

1 HR F RATING, 1 HR T RATING, ASTM E814
FIRERESISTANCE RATED WALL ASSEMBLY:
 2"x6" WOOD STUD
 5/8" TYPE X GYPSUM WALLBOARD
 ONE LAYER ON FRONT SIDE, TWO LAYERS
 ON BACK SIDE

FIBERGLASS BATT INSULATION



NOTES:

1. DRYERBOX TO BE INSTALLED IN ACCORDANCE WITH THE MANUFACTURER'S INSTALLATION INSTRUCTIONS AND UL LISTING.
2. ONLY ONE DRYERBOX SHALL BE INSTALLED IN A CAVITY SPACE OF A 1 HR FIRERESISTANCE RATED WALL ASSEMBLY.
3. WHEN INSTALLED IN BACK-TO-BACK ARRANGEMENTS, EACH DRYERBOX SHALL BE INSTALLED IN A SEPARATE WALL CAVITY. THE DRYERBOXES SHALL BE SEPARATED BY A WOOD OR METAL STUD BETWEEN THE WALL CAVITIES.
4. THE STUD CAVITY WITH THE DRYERBOX MUST BE FILLED WITH FIBERGLASS BATT INSULATION.
5. THE DRYERBOX MAY BE INSTALLED AT ANY ELEVATION ABOVE THE FINISHED FLOOR.



**350 DRYERBOX
 BACK-TO-BACK
 INSTALLATION**

JB ENGINEERING AND CODE CONSULTING, P.C.

1661 CARDINAL DRIVE, MUNSTER, IN 46321 TEL:219-922-6171; FAX: 219-922-6172
 JULIUS BALLANCO, P.E. IN REG# PE60900631 - IN ENG PROF CORP # PC50910000

DWG. NO.

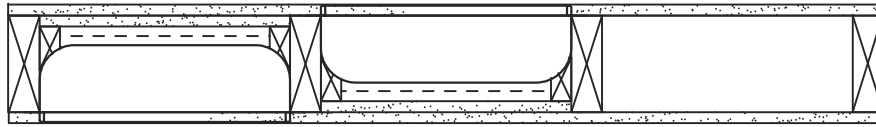
M-20

DRAWN BY: JB

SCALE: NTS

DATE: 1/13/09

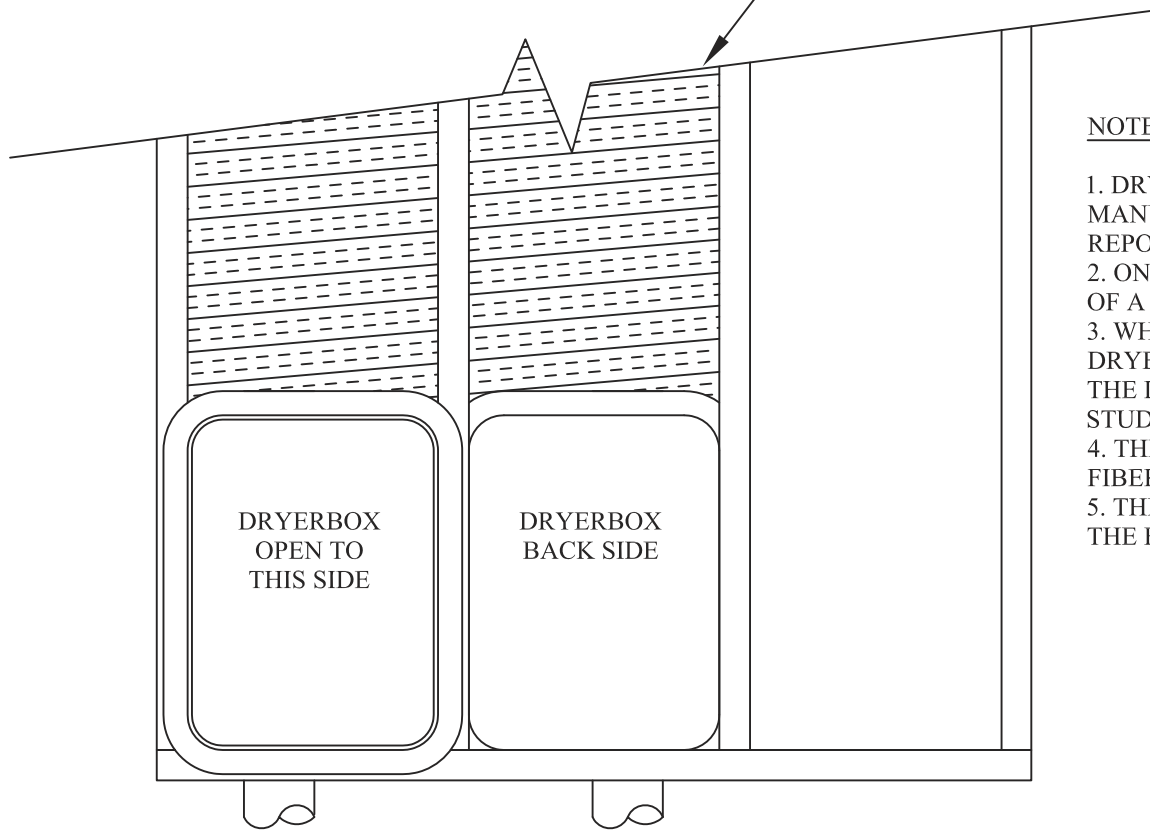
DRYERBOX OPEN TO THIS SIDE



1 HR F RATING, 1 HR T RATING, ASTM E814
FIRERESISTANCE RATED WALL ASSEMBLY:
 2"x6" WOOD STUD
 5/8" TYPE X GYPSUM WALLBOARD
 ONE LAYER ON FRONT SIDE, TWO LAYERS
 ON BACK SIDE

DRYERBOX OPEN TO THIS SIDE

FIBERGLASS BATT INSULATION



NOTES:

1. DRYERBOX TO BE INSTALLED IN ACCORDANCE WITH THE MANUFACTURER'S INSTALLATION INSTRUCTIONS AND UL TEST REPORT AND LISTING.
2. ONLY ONE DRYERBOX SHALL BE INSTALLED IN A CAVITY SPACE OF A 1 HR FIRERESISTANCE RATED WALL ASSEMBLY.
3. WHEN INSTALLED IN BACK-TO-BACK ARRANGEMENTS, EACH DRYERBOX SHALL BE INSTALLED IN A SEPARATE WALL CAVITY. THE DRYERBOXES SHALL BE SEPARATED BY A WOOD OR METAL STUD BETWEEN THE WALL CAVITIES.
4. THE STUD CAVITY WITH THE DRYERBOX MUST BE FILLED WITH FIBERGLASS BATT INSULATION.
5. THE DRYERBOX MAY BE INSTALLED AT ANY ELEVATION ABOVE THE FINISHED FLOOR.



**3D DRYERBOX
 BACK-TO-BACK
 INSTALLATION**

JB ENGINEERING AND CODE CONSULTING, P.C.

1661 CARDINAL DRIVE, MUNSTER, IN 46321 TEL:219-922-6171; FAX: 219-922-6172
 JULIUS BALLANCO, P.E. IN REG# PE60900631 - IN ENG PROF CORP # PC50910000

DWG. NO.

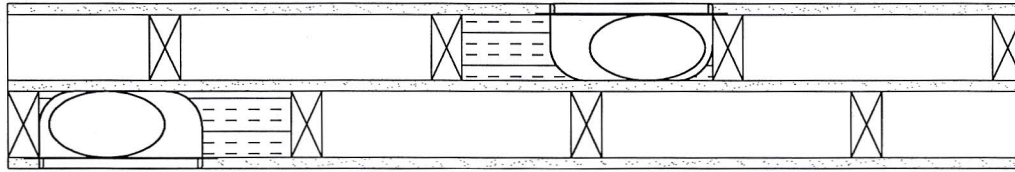
M-21

DRAWN BY: JB

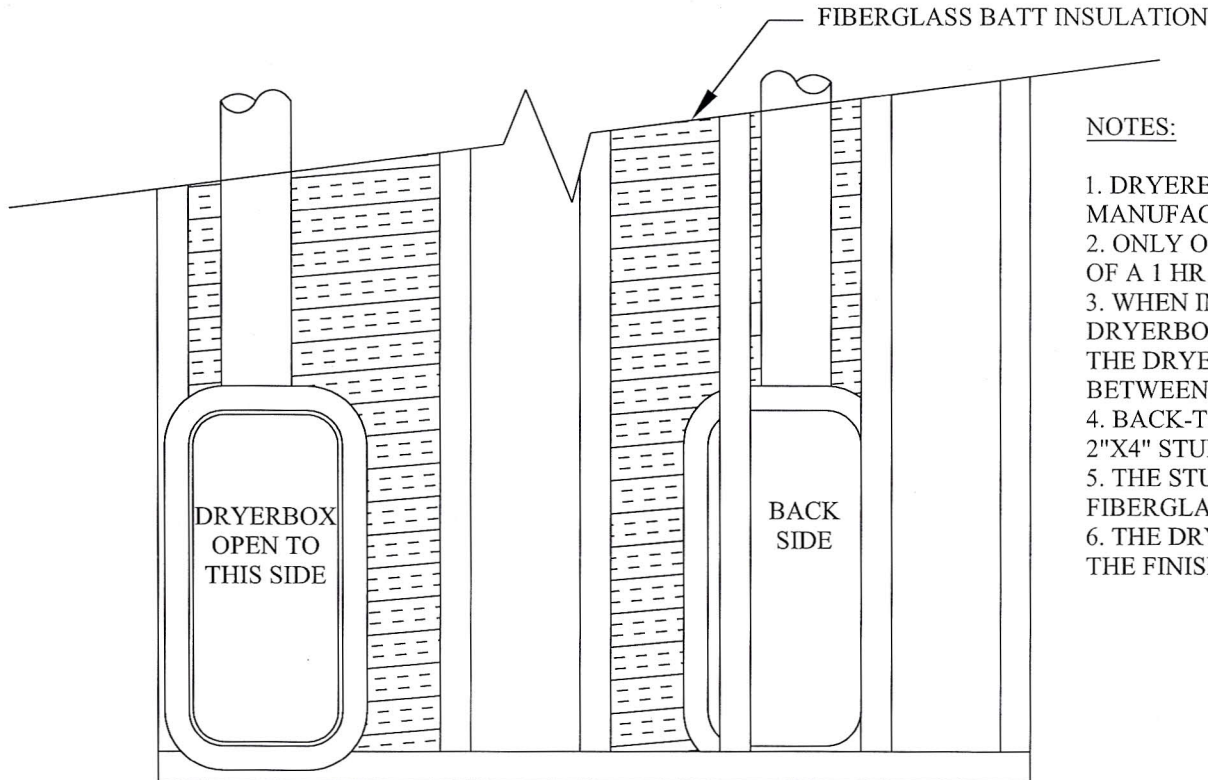
SCALE: NTS

DATE: 1/13/09

DRYERBOX OPEN TO THIS SIDE



DRYERBOX OPEN TO THIS SIDE



1 HR F RATING, 1 HR T RATING, ASTM E814
FIRERESISTANCE RATED WALL ASSEMBLY:
 2"x4" WOOD STUD
 5/8" TYPE X GYPSUM WALLBOARD
 ONE LAYER ON FRONT SIDE, ONE LAYER
 BETWEEN THE WALL, ONE LAYER ON BACK
 SIDE

NOTES:

1. DRYERBOX TO BE INSTALLED IN ACCORDANCE WITH THE MANUFACTURER'S INSTALLATION INSTRUCTIONS AND UL LISTING.
2. ONLY ONE DRYERBOX SHALL BE INSTALLED IN A CAVITY SPACE OF A 1 HR FIRERESISTANCE RATED WALL ASSEMBLY.
3. WHEN INSTALLED IN BACK-TO-BACK ARRANGEMENTS, EACH DRYERBOX SHALL BE INSTALLED IN A SEPARATE WALL CAVITY. THE DRYERBOXES SHALL BE SEPARATED BY A WOOD STUD BETWEEN THE WALL CAVITIES.
4. BACK-TO-BACK INSTALLATIONS ARE PERMITTED FOR EITHER A 2"x4" STUD WALL ASSEMBLY OR A 2"x6" STUD WALL ASSEMBLY.
5. THE STUD CAVITY WITH THE DRYERBOX MUST BE FILLED WITH FIBERGLASS BATT INSULATION.
6. THE DRYERBOX MAY BE INSTALLED AT ANY ELEVATION ABOVE THE FINISHED FLOOR.

Julius Ballanco
 8/9/10
 JULIUS BALLANCO, P.E.
 PROFESSIONAL ENGINEER

350 DRYERBOX
 CENTER WALL
 DOUBLE WALL

JB ENGINEERING AND CODE CONSULTING, P.C.

1661 CARDINAL DRIVE, MUNSTER, IN 46321 TEL:219-922-6171; FAX: 219-922-6172
 JULIUS BALLANCO, P.E. IN REG# PE60900631 - IN ENG PROF CORP # PC50910000

DWG. NO.

DRAWN BY: JB

SCALE: NTS

DATE: 8/9/10

M-22